



Cairns chess is going places!

Our local chess club is growing nicely, schools chess is gaining in popularity, and chess has been really visible in our local media recently. Chess in Cairns is really going places, but we decided to take this mission literally by putting together a small team and making the road trip to Townsville on August 11 for the annual North Queensland Open. The full report is on the back page. Well done Team Cairns!

On the schools front, we just had the Finals Round of the FNQ regional championship. Congratulations to the two teams who will be representing FNQ at the State Finals in October. Again, just turn the page for all the results!

New ratings are out for many Far North area students - check the IQ Chess website to see if yours has changed!

And as we come into Term 4, the end of the school year is in sight. It's been a big year in chess so far and it's a good time to start planning for another big one in 2008. See you there!

Yours in chess,

David Cowland-Cooper
IQ Chess FNQ Director



What's On

- | | |
|-----------|---|
| Aug 27 | FNQ Inter-School FINALS
@ TAS White Rock |
| Sep 21 | Term 3 END |
| Sep 24/27 | Smithfield Centre Junior Chess |
| Oct 1/4 | Smithfield Centre Junior Chess |
| Oct 8 | Term 4 START |
| Oct 13-14 | State Inter-School Finals* |
| Oct 15 | State Girls Inter-School Finals* |
| Oct 25 | GM Ian Rogers visits Cairns
Blindfold & Normal Simul
@ TAS White Rock |
| Dec 1-2 | Australian Inter-School Finals* |
| Jan 2008 | Australian Junior Championships
@ Sydney - venue TBC |

* All hosted in Brisbane



Cairns Chess Club

The Cairns Chess Club is now seeing regular attendances of more than 10 players every Thursday. The record turnout so far is 20! It's a great venue for adults and children alike to play against new opponents and improve their play, in a very casual atmosphere. Here are the details, hope to see you there!

Weekly on Thursday nights
6pm to 8:30pm

@ The Coffee Bean
Stockland Shopping Centre, Earlville

FREE first attendance
then a small annual fee
\$40 for adults, \$20 for juniors and concession

FNQ Inter-Schools Competition Round 2 Results

This second round of Far North Queensland's inter-school chess competitions for 2007 was in fact the finals round, from which teams were selected to represent this region at the state titles in October.

Hosted on August 27 at Trinity Anglican School's Bishop Centre, once again we set a new attendance record for such tournaments outside the south-east corner, with a total of 245 participants.

Summary of Results

Primary Schools Open

Teams Champion

Trinity Anglican School (White Rock)
Team Hermon

Teams Runners-Up

Trinity Anglican School (White Rock)
Team Harding

Teams Third Place

St Francis Xavier

Individual Champion

Robin Wei (Balaclava State School)

Individual Runner-Up

Jesse Hermon (TAS White Rock)

Individual Minor Placings

Kevin Horton (TAS White Rock)
Paris Arens-Strelnikoff (TAS Marlin Coast)
Kevin Christiansen (St Francis Xavier)
Nicholas Reaks (TAS White Rock)

High Schools Open

Teams Champion

St Mary's Catholic College

Teams Runners-Up

Good Counsel College
Team Champions

Teams Third Place

Innisfail State High School
Team 1

Individual Champion

Tim Schweinsberg (Innisfail State High)

Individual Runner-Up

Andrew To (St Mary's)

Individual Minor Placings

Guy Leishman (St Mary's)
Nathan Gill (Gordonvale State High)
Kevin Yang (Good Counsel College)
Scott Yang (Good Counsel College)

Primary Schools Premier

Teams Champion

Trinity Anglican School (White Rock)
Team Jones

Teams Runners-Up

Trinity Anglican School (White Rock)
Team Devine

Teams Third Place

Mundoo State School

Board Champions

1 - Leroy Craig (St Andrew's)
2 - Sidharth Mantha (TAS White Rock)
3 - Jordan Brodie (St Andrew's)
4 - Joshua Elston (St Andrew's)

High Schools Premier

Teams Champion

Trinity Anglican School (White Rock)
Team Hartigan

Teams Runners-Up

St Mary's Catholic College

Teams Third Place

Innisfail State High School
Team Edgerton

Board Champions

1 - Joshua Hartigan (TAS White Rock)
2 - Justin Sabbadin (St Mary's)
3 - Bastian Baumeister (St Mary's)
4 - Voua Vue (Good Counsel College)

The champion premier division teams from TAS White Rock will go to Brisbane in October for the State Finals. Congratulations and good luck!

School Holiday Chess at Smithfield Centre

School holiday chess proved to be so popular during the last school holidays that we're doing it all over again this September!

Thanks to Smithfield Centre, this time we'll be playing chess on 4 days - both Mondays and both Thursdays of the official holiday period.

Prizes will again be available in both Open and Primary School categories, with additional prizes for Best & Fairest and for the Best Novice.

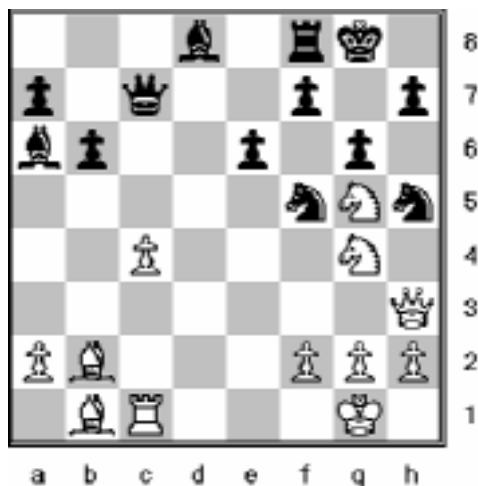
Check out the last page of this newsletter for all the details and entry form. See you there!

Check it out, mate!

The puzzle in TropiChess #3 was a real game situation that came about after White's move Qxg2, where Black's rook had just been. If Black just recaptures, White gets two rooks for the queen and is looking good. But why take the queen when checkmate is on offer!

1. ... Rh4+!
2. Qh2 Qd5+
3. Rf3 Qxf3++

This edition's puzzle is a neat mix of a couple of themes. White to mate in 3.



Chess Quiz!

In the last edition of TropiChess, we asked a few curly chess questions. Did you manage to answer them all? Check your answers here!

1. How many possible positions are there on the chess board after White and Black have each played just one move?

A. White can make 20 different first moves, and so can Black. 20 times 20 is 400 different possible positions. Imagine how many possible positions there are after a standard game of 30 moves!

2. Who is currently Australia's highest ranked chess player? (This person has been Australia's number one for the past 25 years!)

A. GM Ian Rogers. He's just retired from competition chess. How many sports people do you know who have been at the top of their game for that long?!

3. The chess terms *en passant* and *j'adoube* come from what language? How about the word *zugzwang*?

A. *en passant* - French, "in passing"
j'adoube - French, "I adjust"
zugzwang - German, for a situation where you don't want to move, but you have to!

4. When and where will the next Chess Olympiad be hosted?

A. The Chess Olympiad is hosted in even-numbered years. The next is therefore in 2008, and the host city will be Dresden, Germany.

5. What is White's most common first move?

A. e4. Moving the King's pawn two squares forward achieves a few things, staking a claim for the centre, allowing the queen and bishop to develop, and bringing White one move closer to castling. No wonder it's so popular!

North Queensland Open Road Trip

The Townsville Chess Club has been running its annual North Queensland Open for a number of years now. Small though it is, it's a regular fixture on the Australian Chess Grand Prix calendar and this year it was in the diary for the weekend of August 11-12. With Townsville only a beautiful 4-hour drive away, it seemed like the perfect opportunity for the Cairns Chess Club's first road trip.

Sam, Damien, Robin and I piled into the Chess Express and turned up at the Townsville City Council Chambers on a Saturday morning to begin our assault on the title. The field was only 18 players strong, but many of the competitors were highly rated. The tourney got underway with a minimum of fuss, but unfortunately, Sam and I were matched up against each other in the first round! Someone had to lose, but by the end of the day's play we had all done pretty well. 2 wins and 2 losses for each of the adult members of our team, and young Robin came home that night on 2.5!

We went into Sunday's last three rounds feeling pretty confident. Once again, though, a match within our team, this time Damien and myself in Round 5. By the time the last round came around, the tournament's eventual winner had already been decided, but Robin was playing on the top board, Sam on Board 2, and I was on Board 3 - Cairns players dominating the top table!

Sam lost his last game on time, though he was in a strong position. I won my game - a little lucky, but a nice sacrifice worked out well for me. And Robin got a draw on Board 1 against an opponent rated over 2000, the only person to take any points from him that whole weekend. Damien won his last game, too, for a great finish for Team Cairns!

Robin and I therefore ended up on 5 points out of 7, equal second overall, and we took home the trophies you can see in the photo on the front page. Our drive home was filled with talk of the next opportunity to hit the road as Team Cairns, or perhaps to host our own big chess tournament. Let's hope it comes sooner rather than later!

Sam has been kind enough to share one of his games with us. He played Black in this one against one of the Townsville Chess Club's senior players, Ken Stark. At the position in the diagram, the game was on a knife-edge, but Sam held firm and won through. Well worth playing through this one, enjoy!

White - Ken Stark

Black - Boipuso Samuel

Alekhine's Defence: Four Pawns Attack

- | | | | |
|----------|-------|-----------|------|
| 1. e4 | Nf6 | 16. O-O-O | Bg6 |
| 2. e5 | Nd5 | 17. h4 | e5 |
| 3. d4 | d6 | 18. h5 | exd4 |
| 4. exd6 | cxd6 | 19. Qf3 | Bf7 |
| 5. Bc4 | Nb6 | 20. Bc2 | dxc3 |
| 6. Bb3 | d5 | 21. Qxc3 | Qe5 |
| 7. Bf4 | Nc6 | 22. Qd3 | g6 |
| 8. c3 | Bf5 | 23. hxg6 | Bxg6 |
| 9. Nd2 | e6 | 24. Qh3 | Bxc2 |
| 10. Ngf3 | Bd6 | 25. Kxc2 | Qe7 |
| 11. Bxd6 | Qxd6 | 26. b4 | Qg7 |
| 12. Qe2 | O-O | 27. g5 | fxg5 |
| 13. Ne5 | f6 | 28. Rdg1 | Rxf2 |
| 14. Nxc6 | bx c6 | 29. Kb3 | ... |
| 15. g4 | Rae8 | | |



- | | | | |
|----------|-------|---------------|------|
| 30. ... | Rxd2 | 34. Kb3 | Ra3+ |
| 31. Rxc5 | Rb2+ | 35. Kc2 | Rxh3 |
| 32. Ka3 | Nc4+ | | |
| 33. Ka4 | Rxa2+ | White resigns | |

IQ Chess Far North Queensland

ABN 88 923 504 101
PO Box 12321
Cairns DC QLD 4870

0405 435 035
www.iqchess.com.au



IQ Chess For North Queensland
presents



Smithfield Centre Junior Chess Challenge

at

The Retreat
Smithfield Centre, Southern Entrance

on

Monday 24 September 2007
Thursday 27 September 2007
Monday 1 October 2007
Thursday 4 October 2007

10:00am for 10:30am start
4:00pm finish (approximately)

Prizes

\$200 prizes for each day

Format

At least 7 rounds

Approximately 30 minutes per game
Final number of rounds depends on time

Chess clocks may be used at
tournament director's discretion

Smithfield Centre Junior Chess Challenge

Conditions of Entry

Eligibility

This tournament is open to Juniors only - persons aged under the age of 18 at the time of the tournament.

Suitability

Competitors should understand all the rules of chess and have some experience in playing the game. Participants are also expected to demonstrate excellent behaviour and sportsmanship throughout the tournament.

Fees

Entry to this tournament is **FREE OF CHARGE**.

Deadline for Registration

It is possible to join the tournament on the day, but numbers will be limited and preference will be given to players who have pre-registered. **The deadline for registration is Friday 21 September 2007.**

Tournament Format

Each day's play is separate from the other days. Results do not carry over from one day to the next. Players are welcome to compete on as many days as they choose.

Tournament Rules

All standard rules of chess will apply for this tournament, including touch move. In any case, the director of play will have absolute discretion over the correct application of the rules to games in this tournament. Furthermore, if the director or play deems it appropriate, incomplete games may be adjudicated to achieve a result. Spectators and competitors may not give or receive any coaching or advice during play, or otherwise influence the outcome of the competitor's games in any way.

Supervision of Children

While the director of play and Smithfield Centre will make every reasonable effort to supervise the playing area and maintain a safe environment for all participants in the tournament, ultimate responsibility for the wellbeing of each participant remains with parents and guardians. This tournament is not a child care facility. Between games, children are free to wander away from the playing area, and the shopping centre is open to the general public, so parents and guardians must exercise their own discretion and take full responsibility for their child's safety during the tournament.



Smithfield Centre Junior Chess Challenge

Entry Form

Deadline for Registration - Friday 21 September 2007

Name

Address

Postcode

Phone

Date of Birth

Email

School

Grade

Monday 24 September 2007

Thursday 27 September 2007

Monday 1 October 2007

Thursday 4 October 2007

I accept the Conditions of Entry and agree to abide by all decisions of the director of play.

Parent/Guardian Signature

Please submit entry forms to:

IQ Chess For North Queensland

PO Box 12321, James DC QLD 4870

Ph: 0495 435 035 Fax: 07 3523 9377

Email: info@iqchess.com.au

www.iqchess.com.au

